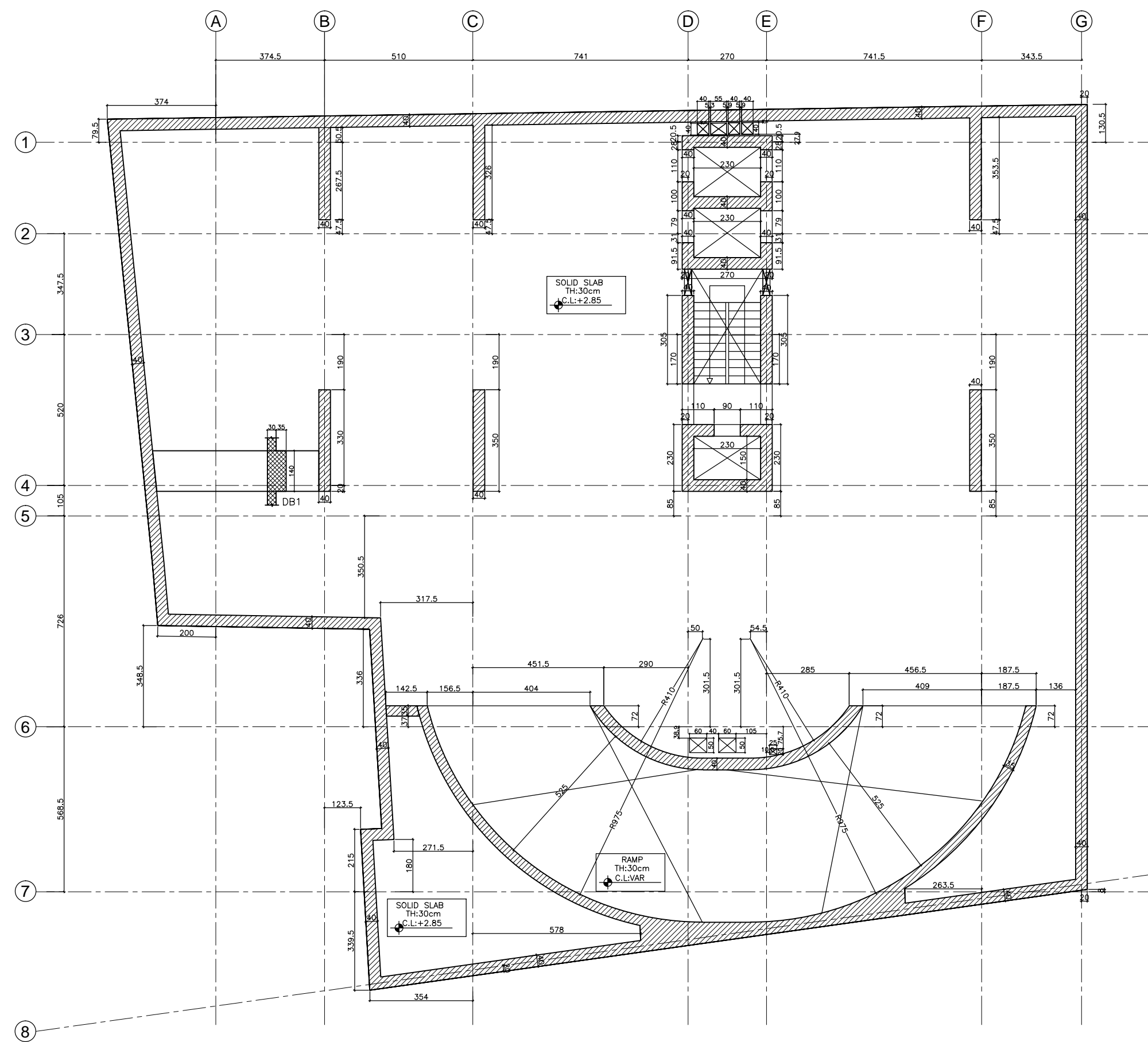


2ND BASEMENT FRAMING PLAN
SC 1/100



GENERAL NOTES:

BASIS OF DESIGN:

1- REINFORCED CONCRETE:

FOR R.C ELEMENTS USE:

- * $f_c=45$ MPa. FOR COLUMNS , BASEMENT WALLS, SHEAR WALLS & RAFT FOUNDATION
- * $f_c=35$ MPa. FOR OTHERS (SLABS,RAMPS,BEAMS,ETC...)
- * $f_c=14$ MPa. FOR BLINDING
- MINIMUM CEMENT CONTENT:350Kg/m³

CONCRETE PROTECTIVE COVER FOR ANY REINFORCEMENT SHALL BE AS FOLLOWS:

- a-SLABS,RIBS,FLAT BEAMS AND WALLS NOT EXPOSED TO EARTH OR WEATHER: 4 cm.
- b-FAIRFACED CONCRETE EXPOSED TO WEATHER: 4 cm.
- c-DROP BEAMS AND COLUMNS: 4 cm.
- d-FOUNDATIONS: 7 cm. top face
10 cm. bottom face
- e-BASEMENTS WALLS: 5 cm. internal face
10 cm. external face

2- REINFORCEMENTS:

- * YIELDING STRESS OF MILD STEEL:
 $f_y=240$ MPa.
- * YIELDING STRESS OF HIGH TENSILE STEEL:
 $F_y=500$ MPa.

LEGEND:

- F.L: FINISHED FLOOR LEVEL.
- C.L: CONCRETE LEVEL.

- STRUCTURAL COLUMN OR WALL TO CONTINUE.
- STRUCTURAL COLUMN OR WALL TO START.
- STRUCTURAL COLUMN OR WALL TO STOP.
- ARCHITECTURAL COLUMN OR WALL.
- SUNKEN SLAB.

BUREAU D'ETUDES
RM SARL
RODOLPHE MATTAR
C.I.S. BUILDING - 72, MAIN ROAD, JAL EL DIB.
Email : info@rodolphemattar.com
PHONE/FAX (9614) 406326 P.O.BOX 70-1035 ANTELIAS LEBANON

BERNARD KHOURY ARCHITECTES
IMM. SOCIETE LIBANAISE POUR LES METAUX
3ème ETAGE RUE 56 SECTEUR JISR 77
LA QUARANTAINE BEYROUTH 2077 7209 LIBAN
TEL: +961 (0)1-570 670 - FAX: +961 (0)1-570 770
E-MAIL: mailbox@bernardkhoury.com

STRUCTURAL SHOP DRAWINGS.



VERTEXGROUP.COM.CO
Tripoli-Maarad-MEA Bldg-10th floor Tel : 06-205 504

PROJECT: **DOGHMOSH LOT38**

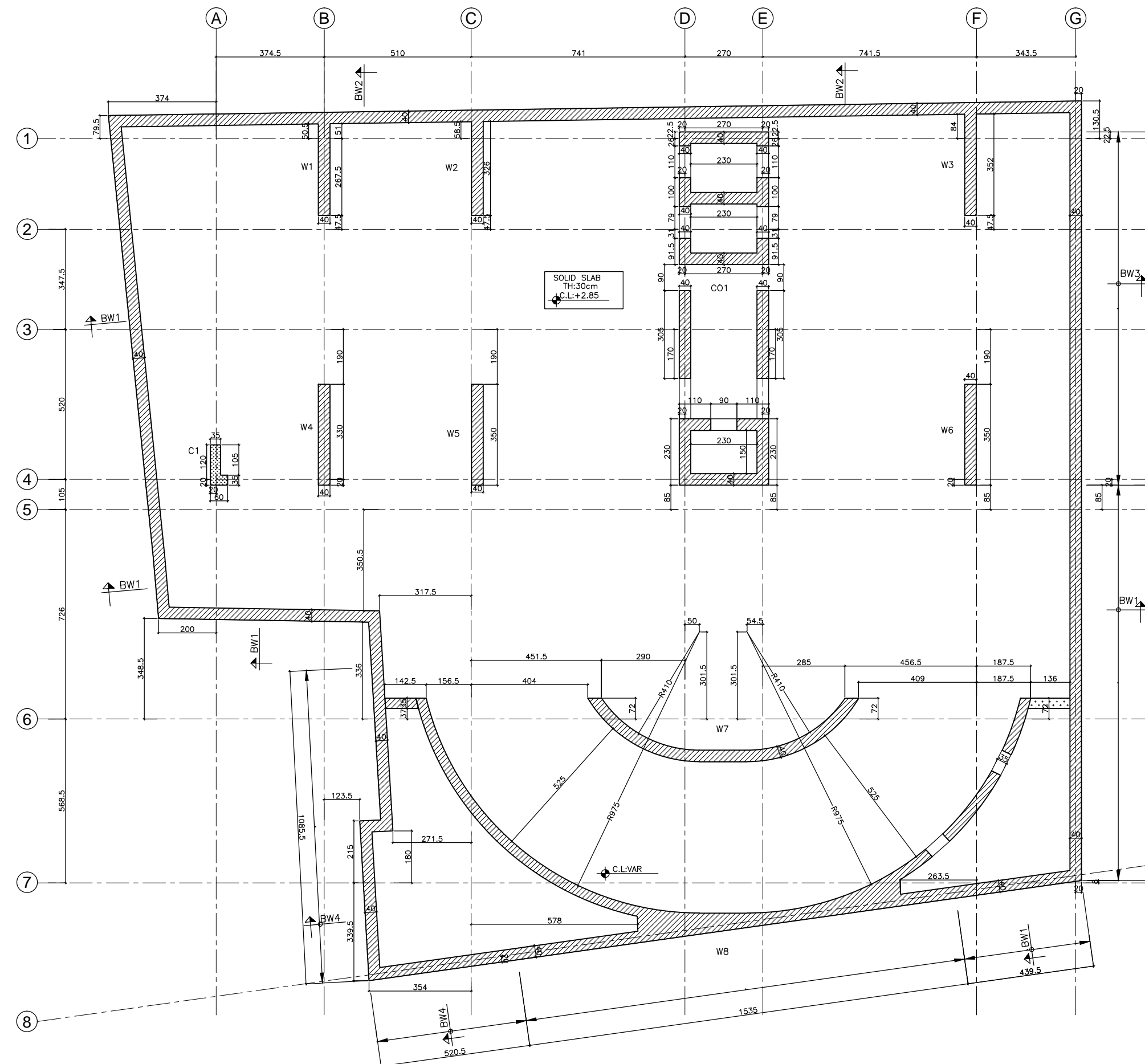
PHASE: Shop Drawing

DRAWING NUMBER & TITLE: **DGM-S-SD-202A**

2ND BASEMENT FRAMING PLAN
(1/2)

Dwg. Reference: C102-FOPL-B2FL	Revision Number : 0
Format A1	Scale 1/100
Revision Issue Date : 18-02-2013	

2ND BASEMENT COLUMNS & WALLS LAYOUT
SC 1/100



GENERAL NOTES:

BASIS OF DESIGN:

1- REINFORCED CONCRETE:

FOR R.C ELEMENTS USE:

- * $f_c=45$ MPa. FOR COLUMNS , BASEMENT WALLS, SHEAR WALLS & RAFT FOUNDATION
- * $f_c=35$ MPa. FOR OTHERS (SLABS,RAMPS,BEAMS,ETC...)
- * $f_c=14$ MPa. FOR BLINDING

MINIMUM CEMENT CONTENT:350Kg/m3

CONCRETE PROTECTIVE COVER FOR ANY REINFORCEMENT SHALL BE AS FOLLOWS:

- a-SLABS,RIBS,FLAT BEAMS AND WALLS NOT EXPOSED TO EARTH OR WEATHER: 4 cm.
- b-FAIRFACED CONCRETE EXPOSED TO WEATHER: 4 cm.
- c-DROP BEAMS AND COLUMNS: 4 cm.
- d-FOUNDATIONS: 7 cm. top face
10 cm. bottom face
- e-BASEMENTS WALLS: 5 cm. internal face
10 cm. external face

2- REINFORCEMENTS:

- * YIELDING STRESS OF MILD STEEL:
 $f_y=240$ MPa.
- * YIELDING STRESS OF HIGH TENSILE STEEL:
 $F_y=500$ MPa.

LEGEND:

F.L: FINISHED FLOOR LEVEL.
C.L: CONCRETE LEVEL.

- STRUCTURAL COLUMN OR WALL TO CONTINUE.
- STRUCTURAL COLUMN OR WALL TO START.
- STRUCTURAL COLUMN OR WALL TO STOP.
- ARCHITECTURAL COLUMN OR WALL.
- SUNKEN SLAB.

BUREAU D'ETUDES SARL
RODOLPHE MATTAR
C.I.S. BUILDING - 72, MAIN ROAD, JAL EL DIB.
Email : info@rodolphemattar.com
PHONE/FAX (9614) 406326 P.O.BOX 70-1035 ANTELIAS LEBANON

BERNARD KHOURY ARCHITECTES
IMM. SOCIETE LIBANAISE POUR LES METAUX
3ème ETAGE RUE 56 SECTEUR JISR 77
LA QUARANTAINE BEYROUTH 2077 7209 LIBAN
TEL: +961 (0)1-570 670 - FAX: +961 (0)1-570 770
E-MAIL: mailbox@bernardkhoury.com

STRUCTURAL SHOP DRAWINGS.

vertex group

VERTEXGROUP.COM.CO
Tripoli-Maarad-MEA Bldg-10th floor Tel : 06-205 504

PROJECT:
DOGHMOSH LOT38

PHASE: Shop Drawing
DRAWING NUMBER & TITLE: **DGM-S-SD-202B**

2ND BASEMENT COLUMNS & WALLS LAYOUT

Dwg. Reference: C102-FOPL-B2FL	Revision Number : (2/2)
Format A1	Scale 1/100
Revision Issue Date : 18-02-2013	

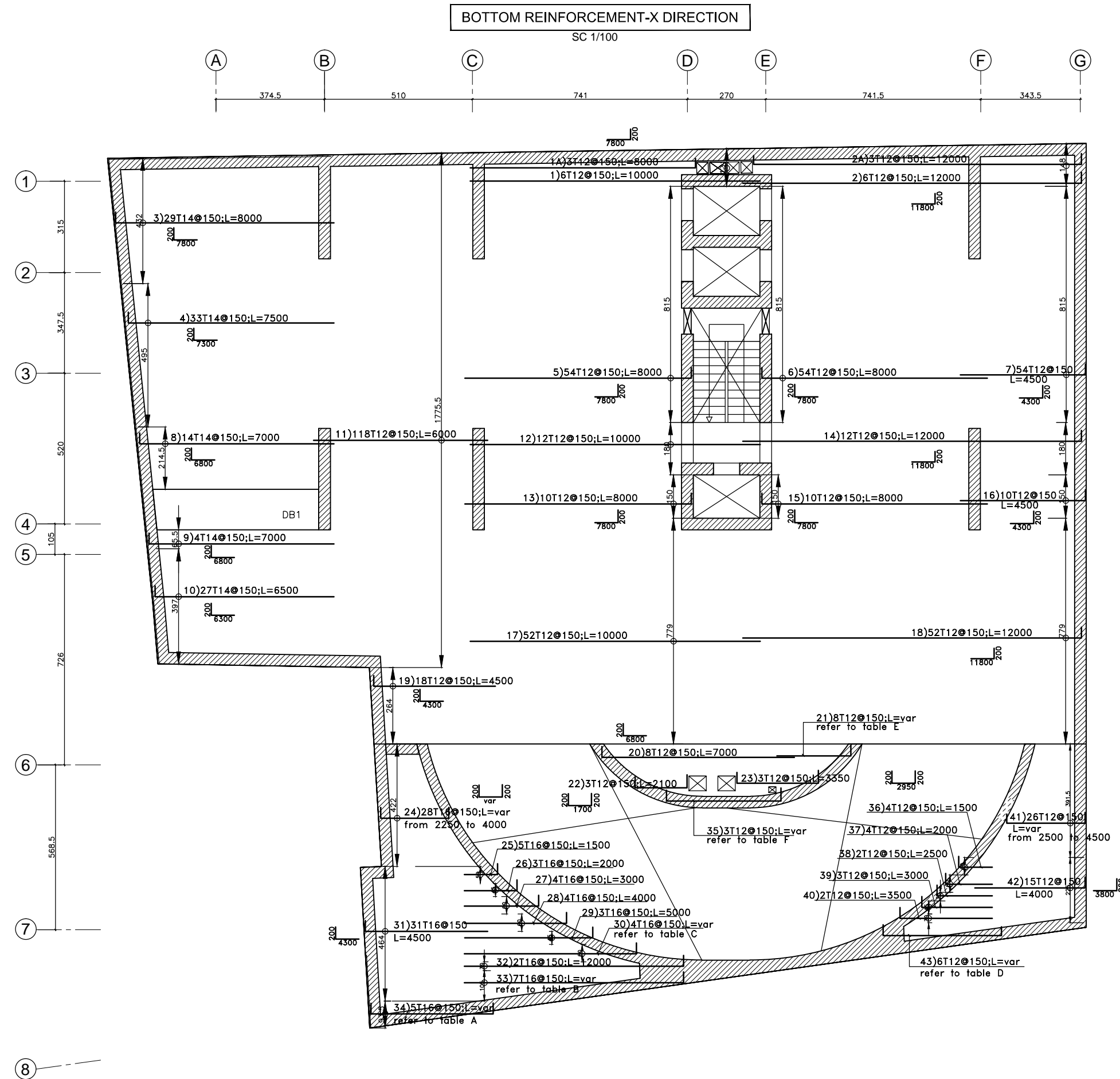


TABLE A

diam	nb	length	shape
16	1	2100	
16	1	3150	
16	1	4150	
16	1	5150	
16	1	6200	

TABLE B

diam	nb	length	shape
16	1	4000	
16	1	5000	
16	1	6000	
16	1	7000	
16	1	8000	
16	1	9000	
16	1	10000	

TABLE C

diam	nb	length	shape
16	1	5500	
16	1	6000	
16	1	6500	
16	1	7500	

TABLE D

diam	nb	length	shape
12	1	3500	
12	1	4100	
12	1	4750	
12	1	5500	
12	1	6200	
12	1	6950	

TABLE E

diam	nb	length	shape
12	1	3250	
12	3	3000	
12	2	2500	
12	2	2000	

TABLE F

diam	nb	length	shape
12	1	5950	
12	1	5250	
12	1	4350	

GENERAL NOTES:

BASIS OF DESIGN:

1- REINFORCED CONCRETE:

FOR R.C ELEMENTS USE:

- * $f_c=45$ MPa. FOR COLUMNS, BASEMENT WALLS, SHEAR WALLS & RAFT FOUNDATION
- * $f_c=35$ MPa. FOR OTHERS (SLABS,RAMPS,BEAMS,ETC...)
- * $f_c=14$ MPa. FOR BLINDING

MINIMUM CEMENT CONTENT:350Kg/m3

CONCRETE PROTECTIVE COVER FOR ANY REINFORCEMENT SHALL BE AS FOLLOWS:

a-SLABS,RIBS,FLAT BEAMS AND WALLS NOT EXPOSED TO EARTH OR WEATHER: 4 cm.

b-FAIRFACED CONCRETE EXPOSED TO WEATHER: 4 cm.

c-DROP BEAMS AND COLUMNS: 4 cm.

d-FOUNDATIONS: 7 cm. top face
10 cm. bottom face

e-BASEMENTS WALLS: 5 cm. internal face
10 cm. external face

2- REINFORCEMENTS:

- * YIELDING STRESS OF MILD STEEL: $f_y=240$ MPa.
- * YIELDING STRESS OF HIGH TENSILE STEEL: $F_y=500$ MPa.

LEGEND:

F.L: FINISHED FLOOR LEVEL.
C.L: CONCRETE LEVEL.

- STRUCTURAL COLUMN OR WALL TO CONTINUE.
- STRUCTURAL COLUMN OR WALL TO START.
- STRUCTURAL COLUMN OR WALL TO STOP.
- ARCHITECTURAL COLUMN OR WALL.
- SUNKEN SLAB.

BUREAU D'ETUDES
RODOLPHE MATTAR SARL
C.I.S. BUILDING - 72, MAIN ROAD, JAL EL DIB.
Email : info@rodolphemattar.com
PHONE/FAX (9614) 406326 P.O.BOX 70-1035 ANTELIAS LEBANON

BERNARD KHOURY ARCHITECTES
IMM. SOCIETE LIBANAISE POUR LES METAUX
3ème ETAGE RUE 56 SECTEUR JISR 77
LA QUARANTAINE BEYROUTH 2077 7209 LIBAN
TEL: +961 (0)1-570 670 - FAX: +961 (0)1-570 770
E-MAIL: mailbox@bernardkhoury.com

STRUCTURAL SHOP DRAWINGS.

vertex group

VERTEXGROUP.COM.CO
Tripoli-Maarad-MEA Bldg-10th floor Tel : 06-205 504

PROJECT: **DOGHMOSH LOT38**

PHASE: Shop Drawing

DRAWING NUMBER & TITLE: **DGM-S-SD-502A**
2ND BASEMENT
BOTTOM REINFORCEMENT
X DIRECTION (1/6)

Dwg. Reference: C202-REPL-B2FL Revision Number: 0

Format: A1 Scale: 1/100 Revision Issue Date: 18-02-2013

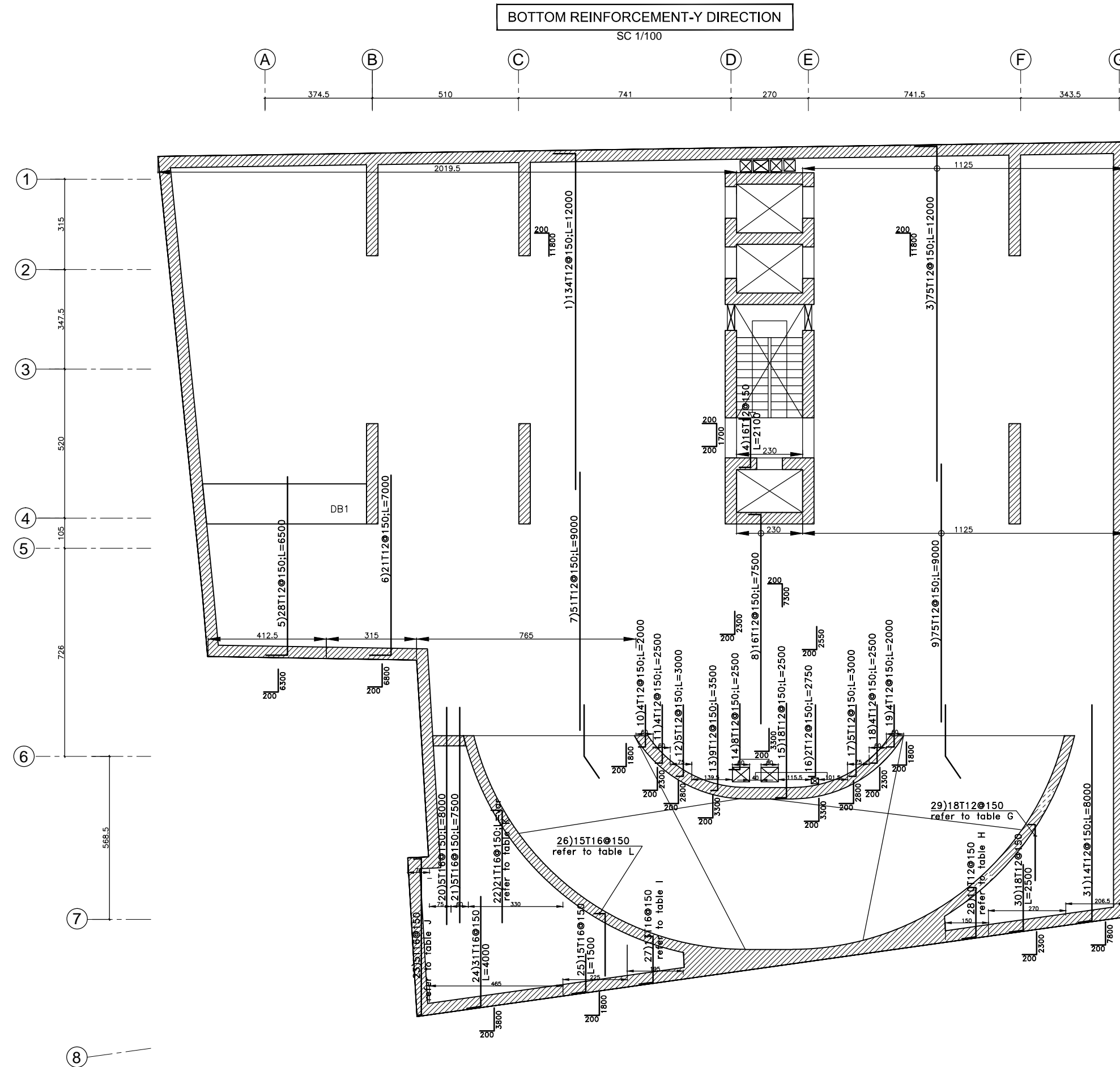


TABLE G

diam	nb	length	shape
12	6	2500	
12	2	3000	
12	3	3500	
12	2	4000	
12	1	4500	
12	2	5000	
12	2	5500	
12	2	6000	

TABLE H

diam	nb	length	shape
12	1	1650	
12	1	1750	
12	1	1850	
12	1	1900	
12	1	2000	
12	1	2100	
12	1	2200	
12	1	2300	
12	1	2450	
12	1	2550	

TABLE I

diam	nb	length	shape
16	1	1600	
16	1	1650	
16	1	1700	
16	1	1800	
16	1	1850	
16	1	1900	
16	1	2000	
16	1	2050	
16	1	2150	
16	1	2200	
16	1	2300	
16	1	2400	
16	1	2450	

TABLE J

diam	nb	length	shape
16	1	1800	
16	1	4400	
16	2	5850	
16	1	5800	

TABLE K

diam	nb	length	shape
16	3	1500	
16	3	2000	
16	3	2500	
16	2	3000	
16	2	3500	
16	2	4000	
16	1	4500	
16	2	5000	
16	1	5500	
16	1	6000	
16	1	6500	

TABLE L

diam	nb	length	shape
16	2	2000	
16	5	2500	
16	3	3000	
16	4	3500	

GENERAL NOTES:

BASIS OF DESIGN:

1- REINFORCED CONCRETE:

FOR R.C ELEMENTS USE:

- * $f_c=45$ MPa. FOR COLUMNS, BASEMENT WALLS, SHEAR WALLS & RAFT FOUNDATION
- * $f_c=35$ MPa. FOR OTHERS (SLABS,RAMPS,BEAMS,ETC...)
- * $f_c=14$ MPa. FOR BLINDING

MINIMUM CEMENT CONTENT:350Kg/m3

CONCRETE PROTECTIVE COVER FOR ANY REINFORCEMENT SHALL BE AS FOLLOWS:

- a-SLABS,RIBS,FLAT BEAMS AND WALLS NOT EXPOSED TO EARTH OR WEATHER: 4 cm.
- b-FAIRFACED CONCRETE EXPOSED TO WEATHER: 4 cm.
- c-DROP BEAMS AND COLUMNS: 4 cm.
- d-FOUNDATIONS: 7 cm. top face
10 cm. bottom face
- e-BASEMENTS WALLS: 5 cm. internal face
10 cm. external face

2- REINFORCEMENTS:

- * YIELDING STRESS OF MILD STEEL: $f_y=240$ MPa.
- * YIELDING STRESS OF HIGH TENSILE STEEL: $F_y=500$ MPa.

LEGEND:

- F.L.: FINISHED FLOOR LEVEL.
- C.L.: CONCRETE LEVEL.

- STRUCTURAL COLUMN OR WALL TO CONTINUE.
- STRUCTURAL COLUMN OR WALL TO START.
- STRUCTURAL COLUMN OR WALL TO STOP.
- ARCHITECTURAL COLUMN OR WALL.
- SUNKEN SLAB.

BUREAU D'ETUDES
RODOLPHE MATTAR SARL
C.I.S. BUILDING - 72, MAIN ROAD, JAL EL DIB,
Email : info@rodolphemattar.com
PHONE/FAX (9614) 406326 P.O.BOX 70-1035 ANTELIAS LEBANON

BERNARD KHOURY ARCHITECTES
IMM. SOCIETE LIBANAISE POUR LES METAUX
3ème ETAGE RUE 56 SECTEUR JISR 77
LA QUARANTAINE BEYROUTH 2077 7209 LIBAN
TEL: +961 (0)1-570 670 - FAX: +961 (0)1-570 770
E-MAIL: mailbox@bernardkhoury.com

STRUCTURAL SHOP DRAWINGS.

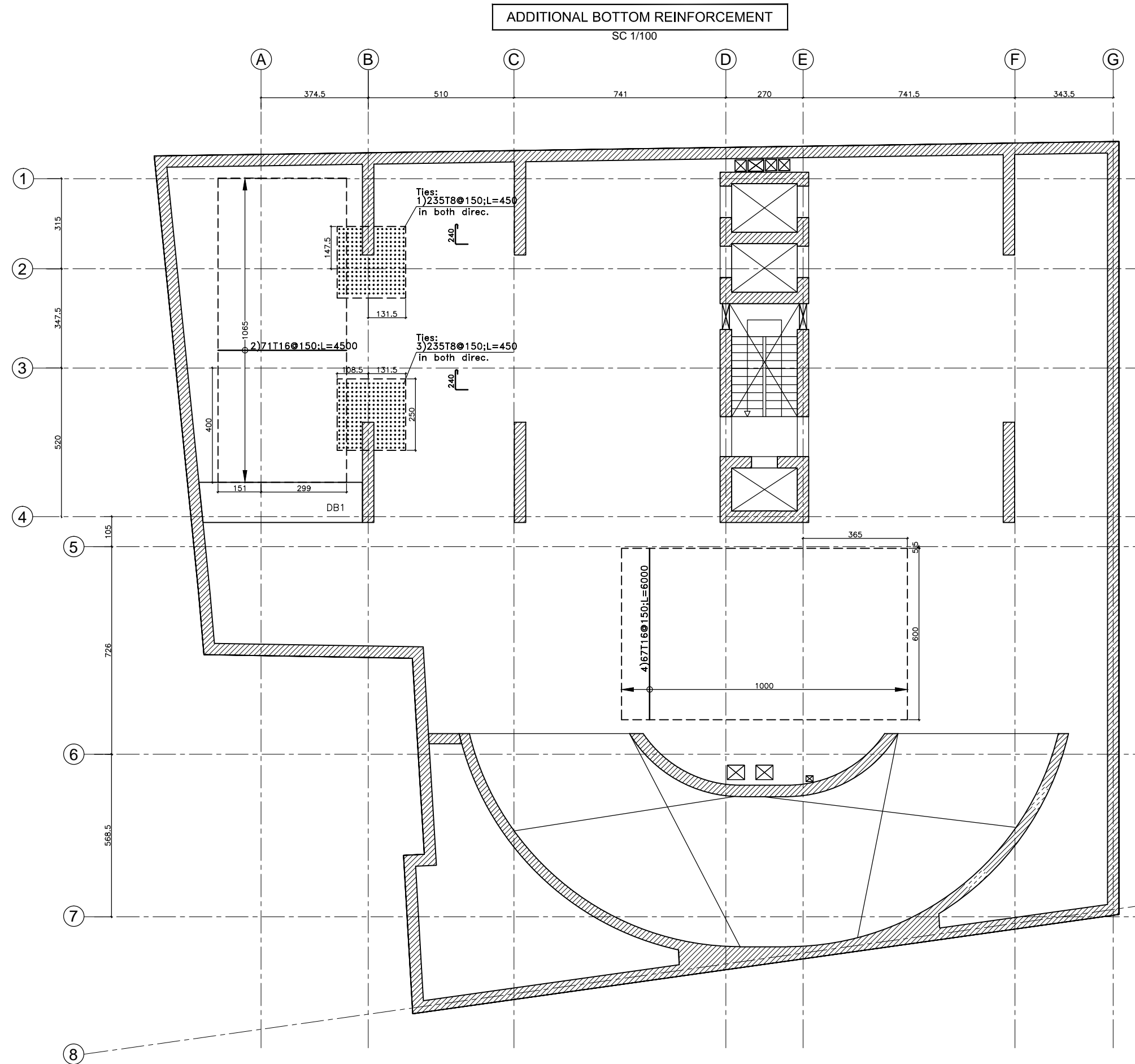
VERTEXGROUP.COM.CO
Tripoli-Maarad-MEA Bldg-10th floor Tel : 06-205 504

PROJECT: **DOGHMOSH LOT38**

PHASE: Shop Drawing

DRAWING NUMBER & TITLE: **DGM-S-SD-502B**
2ND BASEMENT
BOTTOM REINFORCEMENT
Y DIRECTION (2/6)

Dwg. Reference: C202-REPL-B2FL	Revision Number : 0
Format A1	Scale 1/100
Revision Issue Date : 18-02-2013	



GENERAL NOTES:

BASIS OF DESIGN:

1- REINFORCED CONCRETE:

FOR R.C ELEMENTS USE:

- * $f_c=45$ MPa. FOR COLUMNS , BASEMENT WALLS, SHEAR WALLS & RAFT FOUNDATION
- * $f_c=35$ MPa. FOR OTHERS (SLABS,RAMPS,BEAMS,ETC...)
- * $f_c=14$ MPa. FOR BLINDING
- MINIMUM CEMENT CONTENT:350Kg/m3

CONCRETE PROTECTIVE COVER FOR ANY REINFORCEMENT SHALL BE AS FOLLOWS:

- a-SLABS,RIBS,FLAT BEAMS AND WALLS NOT EXPOSED TO EARTH OR WEATHER: 4 cm.
- b-FAIRFACED CONCRETE EXPOSED TO WEATHER: 4 cm.
- c-DROP BEAMS AND COLUMNS: 4 cm.
- d-FOUNDATIONS: 7 cm. top face
10 cm. bottom face
- e-BASEMENTS WALLS: 5 cm. internal face
10 cm. external face

2- REINFORCEMENTS:

- * YIELDING STRESS OF MILD STEEL: $f_y=240$ MPa.
- * YIELDING STRESS OF HIGH TENSILE STEEL: $F_y=500$ MPa.

LEGEND:

- F.L: FINISHED FLOOR LEVEL.
- C.L: CONCRETE LEVEL.

- STRUCTURAL COLUMN OR WALL TO CONTINUE.
- STRUCTURAL COLUMN OR WALL TO START.
- STRUCTURAL COLUMN OR WALL TO STOP.
- ARCHITECTURAL COLUMN OR WALL.
- SUNKEN SLAB.

BUREAU D'ETUDES

RODOLPHE MATTAR
 C.I.S. BUILDING - 72, MAIN ROAD, JAL EL DIB.
 Email : info@rodolphemattar.com
 PHONE/FAX (9614) 406326 P.O.BOX 70-1035 ANTELIAS LEBANON

BERNARD KHOURY ARCHITECTES
 IMM. SOCIETE LIBANAISE POUR LES METAUX
 3ème ETAGE RUE 56 SECTEUR JISR 77
 LA QUARANTAINE BEYROUTH 2077 7209 LIBAN
 TEL: +961 (0)1-570 670 - FAX: +961 (0)1-570 770
 E-MAIL: mailbox@bernardkhoury.com

STRUCTURAL SHOP DRAWINGS

VERTEXGROUP.COM.CO
 Tripoli-Maarad-MEA Bldg-10th floor Tel : 06-205 504

PROJECT: DOGHMOSH LOT38		
PHASE: Shop Drawing		
DRAWING NUMBER & TITLE: DGM-S-SD-502C		
2ND BASEMENT		
ADDITIONAL BOTTOM		
REINFORCEMENT (3/6)		
Dwg. Reference: C202-REPL-B2FL	Revision Number : 0	
Format A1	Scale 1/100	Revision Issue Date : 18-02-2013

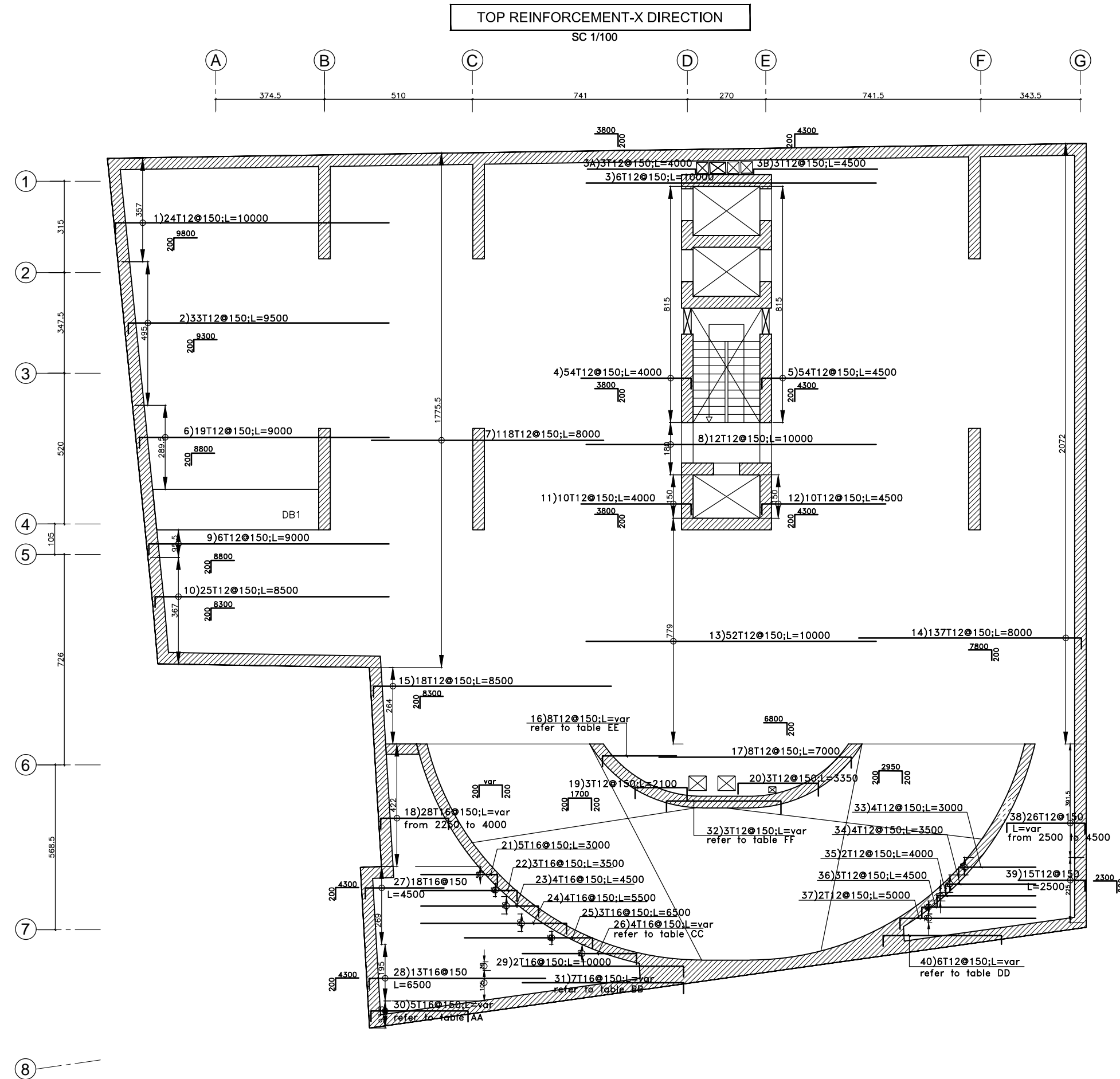


TABLE AA

diam	nb	length	shape
16	1	2100	
16	1	3150	
16	1	4150	
16	1	5150	
16	1	6200	

TABLE BB

diam	nb	length	shape
16	1	2000	
16	1	3000	
16	1	4000	
16	1	5000	
16	1	6000	
16	1	7000	
16	1	8000	

TABLE CC

diam	nb	length	shape
16	1	3500	
16	1	4000	
16	1	4500	
16	1	5500	

TABLE DD

diam	nb	length	shape
12	1	3500	
12	1	4100	
12	1	4750	
12	1	5500	
12	1	6200	
12	1	6950	

TABLE EE

diam	nb	length	shape
12	1	3250	
12	3	3000	
12	2	2500	
12	2	2000	

TABLE FF

diam	nb	length	shape
12	1	5950	
12	1	5250	
12	1	4350	

GENERAL NOTES:

BASIS OF DESIGN:

1- REINFORCED CONCRETE:

FOR R.C ELEMENTS USE:

- * $f_c=45$ MPa. FOR COLUMNS, BASEMENT WALLS, SHEAR WALLS & RAFT FOUNDATION
- * $f_c=35$ MPa. FOR OTHERS (SLABS,RAMPS,BEAMS,ETC...)
- * $f_c=14$ MPa. FOR BLINDING

MINIMUM CEMENT CONTENT:350Kg/m3

CONCRETE PROTECTIVE COVER FOR ANY REINFORCEMENT SHALL BE AS FOLLOWS:

a-SLABS,RIBS,FLAT BEAMS AND WALLS NOT EXPOSED TO EARTH OR WEATHER: 4 cm.

b-FAIRFACED CONCRETE EXPOSED TO WEATHER: 4 cm.

c-DROP BEAMS AND COLUMNS: 4 cm.

d-FOUNDATIONS: 7 cm. top face
10 cm. bottom face

e-BASEMENTS WALLS: 5 cm. internal face
10 cm. external face

2- REINFORCEMENTS:

- * YIELDING STRESS OF MILD STEEL: $f_y=240$ MPa.
- * YIELDING STRESS OF HIGH TENSILE STEEL: $F_y=500$ MPa.

LEGEND:

F.L: FINISHED FLOOR LEVEL.
C.L: CONCRETE LEVEL.

- STRUCTURAL COLUMN OR WALL TO CONTINUE.
- STRUCTURAL COLUMN OR WALL TO START.
- STRUCTURAL COLUMN OR WALL TO STOP.
- ARCHITECTURAL COLUMN OR WALL.
- SUNKEN SLAB.

BUREAU D'ETUDES
RODOLPHE MATTAR SARL
C.I.S. BUILDING - 72, MAIN ROAD, JAL EL DIB.
Email : info@rodolphemattar.com
PHONE/FAX (9614) 406326 P.O.BOX 70-1035 ANTELIAS LEBANON

BERNARD KHOURY ARCHITECTES
IMM. SOCIETE LIBANAISE POUR LES METAUX
3ème ETAGE RUE 56 SECTEUR JISR 77
LA QUARANTAINE BEYROUTH 2077 7209 LIBAN
TEL: +961 (0)1-570 670 - FAX: +961 (0)1-570 770
E-MAIL: mailbox@bernardkhoury.com

STRUCTURAL SHOP DRAWINGS.

vertex group

VERTEXGROUP.COM.CO
Tripoli-Maarad-MEA Bldg-10th floor Tel : 06-205 504

PROJECT: **DOGHMOSH LOT38**

PHASE: Shop Drawing

DRAWING NUMBER & TITLE: **DGM-S-SD-502D**

2ND BASEMENT
TOP REINFORCEMENT
X DIRECTION (4/6)

Dwg. Reference: C202-REPL-B2FL	Revision Number : 0
Format A1	Scale 1/100
Revision Issue Date : 18-02-2013	

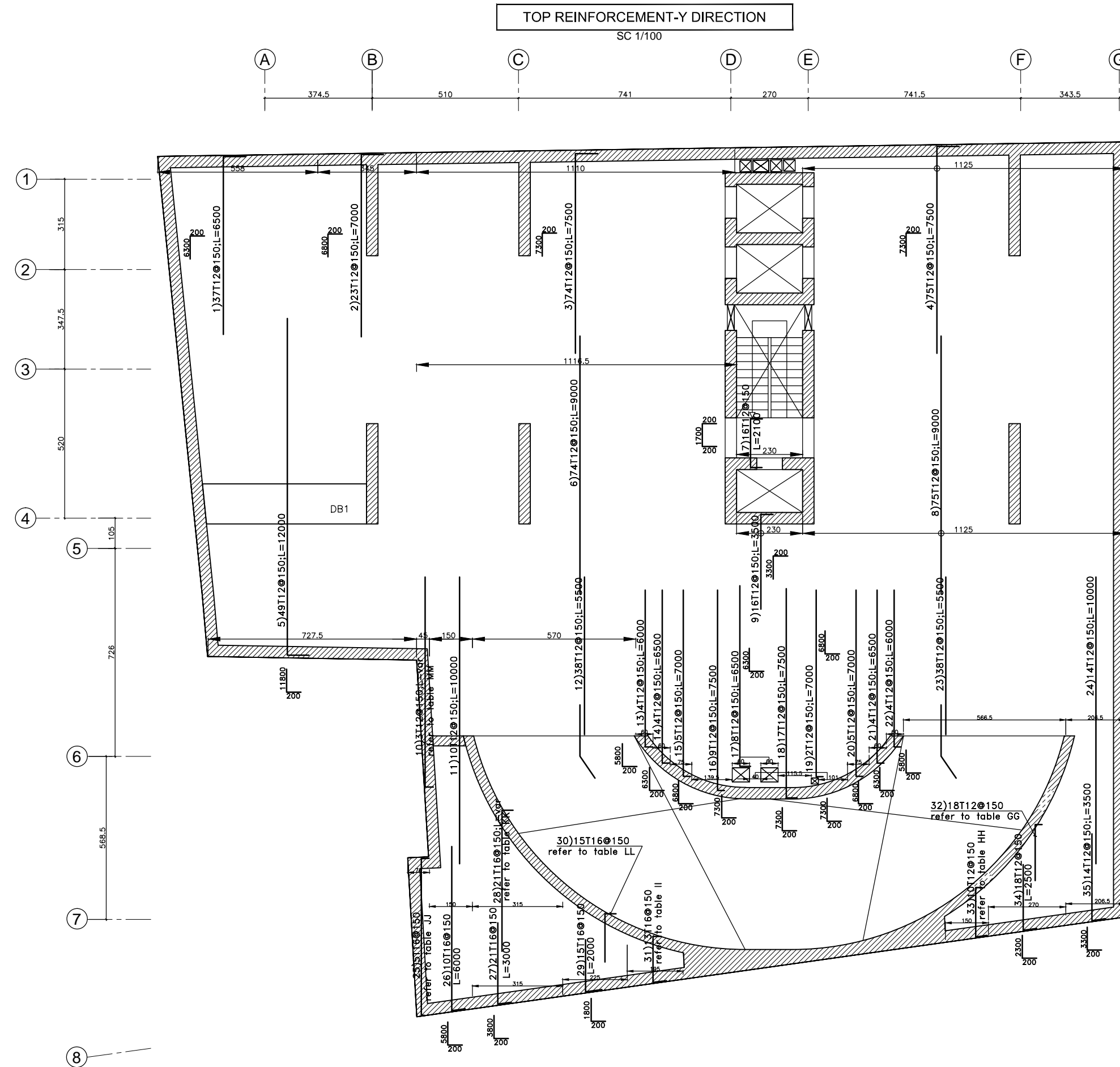


TABLE GG

diam	nb	length	shape
12	6	2500	200 2300
12	2	3000	200 2800
12	3	3500	200 3300
12	2	4000	200 3800
12	1	4500	200 4300
12	1	5000	200 4800
12	2	5500	200 5300
12	2	6000	200 5800

TABLE JJ

diam	nb	length	shape
16	1	1800	200 1400 200
16	1	4400	200 4000 200
16	2	5850	200 5450 200
16	1	5800	200 5400 200

TABLE HH

diam	nb	length	shape
12	1	1650	200 1250 200
12	1	1750	200 1350 200
12	1	1850	200 1450 200
12	1	1900	200 1500 200
12	1	2000	200 1600 200
12	1	2100	200 1700 200
12	1	2200	200 1800 200
12	1	2300	200 1900 200
12	1	2450	200 2050 200
12	1	2550	200 2150 200

TABLE KK

diam	nb	length	shape
16	3	2500	200 2300
16	3	3000	200 2800
16	3	3500	200 3300
16	2	4000	200 3800
16	2	4500	200 4300
16	2	5000	200 4800
16	1	5500	200 5300
16	2	6000	200 5800
16	1	6500	200 6300
16	1	7000	200 6800
16	1	7500	200 7300

TABLE II

diam	nb	length	shape
16	1	1600	200 1200 200
16	1	1650	200 1250 200
16	1	1700	200 1300 200
16	1	1800	200 1400 200
16	1	1850	200 1450 200
16	1	1900	200 1500 200
16	1	2000	200 1600 200
16	1	2050	200 1650 200
16	1	2150	200 1750 200
16	1	2200	200 1800 200
16	1	2300	200 1900 200
16	1	2400	200 2000 200
16	1	2450	200 2050 200

TABLE LL

diam	nb	length	shape
16	2	1500	200 1300
16	5	2000	200 1800
16	3	2500	200 2300
16	4	3000	200 2800

TABLE MM

diam	nb	length	shape
16	1	5000	200 4800
16	1	7000	200 6800
16	1	9500	200 9300

GENERAL NOTES:

BASIS OF DESIGN:

1- REINFORCED CONCRETE:

FOR R.C ELEMENTS USE:

* $f_c=45$ MPa. FOR COLUMNS, BASEMENT WALLS, SHEAR WALLS & RAFT FOUNDATION

* $f_c=35$ MPa. FOR OTHERS (SLABS,RAMPS,BEAMS,ETC...)

* $f_c=14$ MPa. FOR BLINDING

MINIMUM CEMENT CONTENT:350Kg/m3

CONCRETE PROTECTIVE COVER FOR ANY REINFORCEMENT SHALL BE AS FOLLOWS:

a-SLABS,RIBS,FLAT BEAMS AND WALLS NOT EXPOSED TO EARTH OR WEATHER: 4 cm.

b-FAIRFACED CONCRETE EXPOSED TO WEATHER: 4 cm.

c-DROP BEAMS AND COLUMNS: 4 cm.

d-FOUNDATIONS: 7 cm. top face
10 cm. bottom face

e-BASEMENTS WALLS: 5 cm. internal face
10 cm. external face

2- REINFORCEMENTS:

* YIELDING STRESS OF MILD STEEL: $f_y=240$ MPa.

* YIELDING STRESS OF HIGH TENSILE STEEL: $F_y=500$ MPa.

LEGEND:

F.L.: FINISHED FLOOR LEVEL.

C.L.: CONCRETE LEVEL.

STRUCTURAL COLUMN OR WALL TO CONTINUE.

STRUCTURAL COLUMN OR WALL TO START.

STRUCTURAL COLUMN OR WALL TO STOP.

ARCHITECTURAL COLUMN OR WALL.

SUNKEN SLAB.

BUREAU D'ETUDES
RODOLPHE MATTAR SARL
C.I.S. BUILDING - 72, MAIN ROAD, JAL EL DIB.
Email : info@rodolphemattar.com
PHONE/FAX (9614) 406326 P.O.BOX 70-1035 ANTELIAS LEBANON

BERNARD KHOURY ARCHITECTES
IMM. SOCIETE LIBANAISE POUR LES METAUX
3ème ETAGE RUE 56 SECTEUR JISR 77
LA QUARANTAINE BEYROUTH 2077 7209 LIBAN
TEL: +961 (0)1-570 670 - FAX: +961 (0)1-570 770
E-MAIL: mailbox@bernardkhoury.com

STRUCTURAL SHOP DRAWINGS.

VERTEXGROUP.COM.CO
Tripoli-Maarad-MEA Bldg-10th floor Tel : 06-205 504

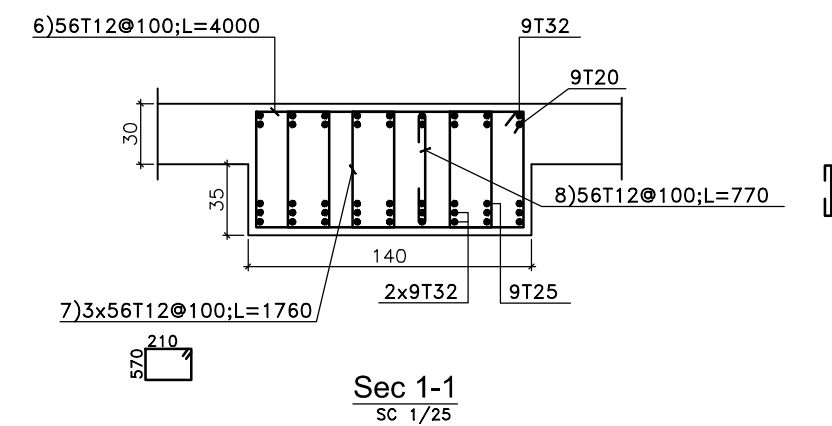
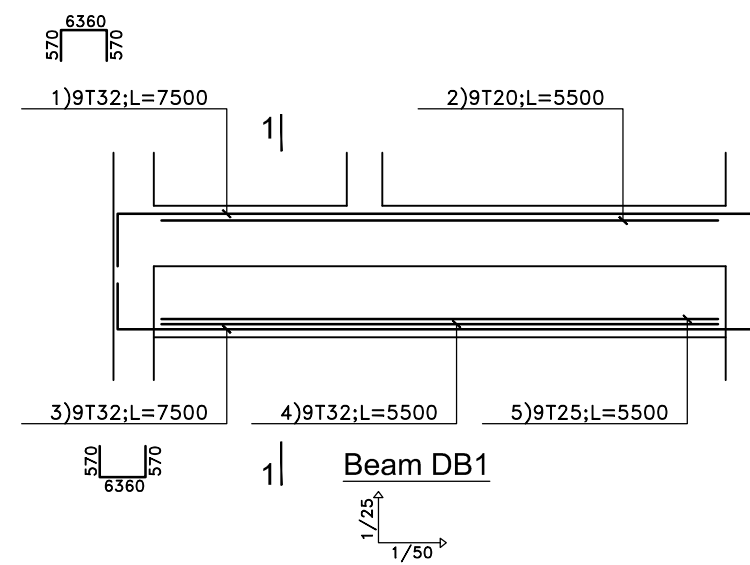
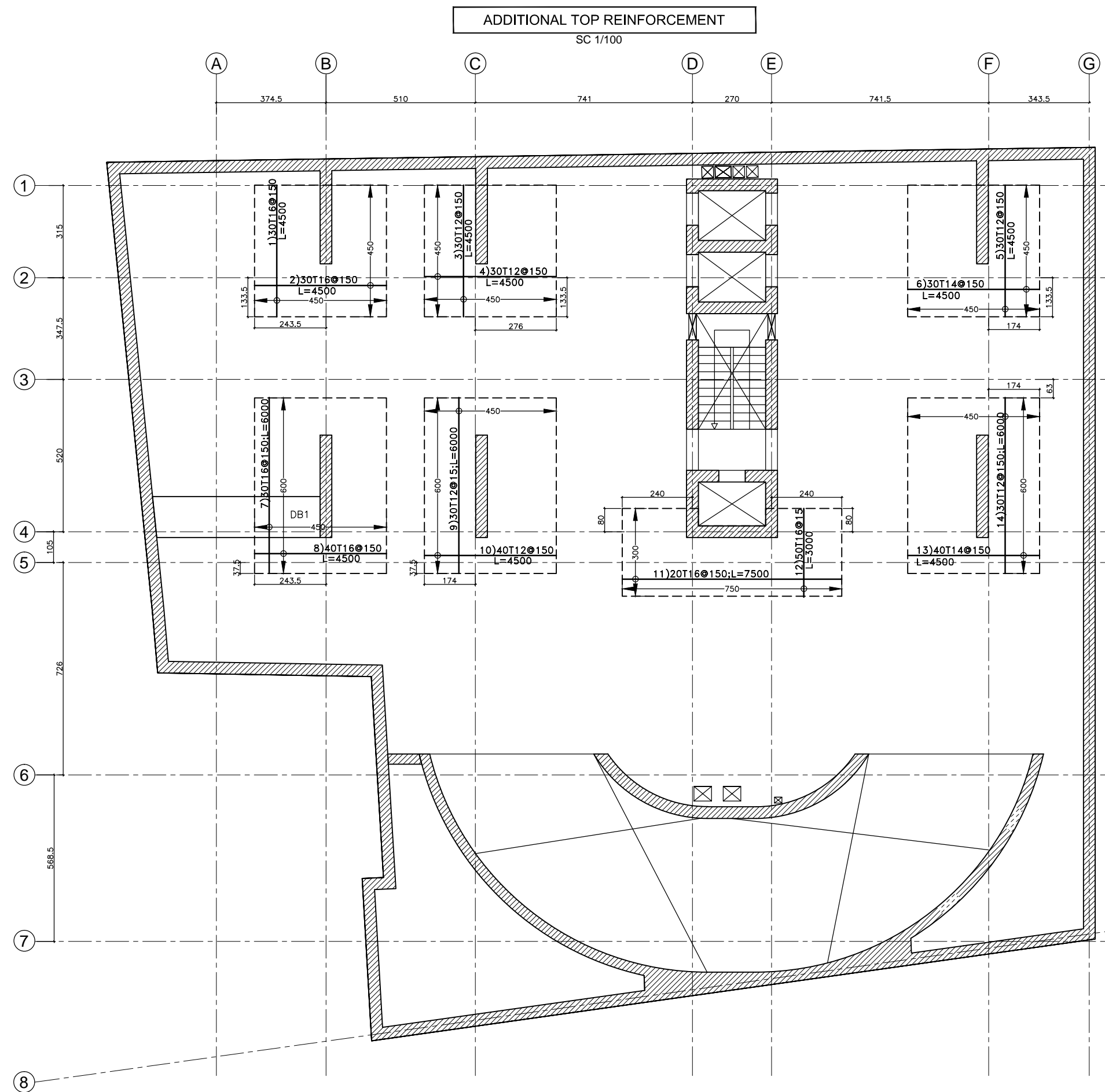
PROJECT: **DOGHMOSH LOT38**

PHASE: Shop Drawing

DRAWING NUMBER & TITLE: **DGM-S-SD-502E**

2ND BASEMENT
TOP REINFORCEMENT
Y DIRECTION (5/6)

Dwg. Reference: C202-REPL-B2FL	Revision Number : 0
Format A1	Scale 1/100
Revision Issue Date : 18-02-2013	



GENERAL NOTES:

BASIS OF DESIGN:

1- REINFORCED CONCRETE:

FOR R.C ELEMENTS USE:

- * $f_c=45$ MPa. FOR COLUMNS , BASEMENT WALLS, SHEAR WALLS & RAFT FOUNDATION
- * $f_c=35$ MPa. FOR OTHERS (SLABS,RAMPS,BEAMS,ETC...)
- * $f_c=14$ MPa. FOR BLINDING
- MINIMUM CEMENT CONTENT:350Kg/m3

CONCRETE PROTECTIVE COVER FOR ANY REINFORCEMENT SHALL BE AS FOLLOWS:

- a-SLABS,RIBS,FLAT BEAMS AND WALLS NOT EXPOSED TO EARTH OR WEATHER: 4 cm.
- b-FAIRFACED CONCRETE EXPOSED TO WEATHER: 4 cm.
- c-DROP BEAMS AND COLUMNS: 4 cm.
- d-FOUNDATIONS: 7 cm. top face
10 cm. bottom face
- e-BASEMENTS WALLS: 5 cm. internal face
10 cm. external face

2- REINFORCEMENTS:

- * YIELDING STRESS OF MILD STEEL:
 $f_y=240$ MPa.
- * YIELDING STRESS OF HIGH TENSILE STEEL:
 $F_y=500$ MPa.

LEGEND:

- F.L: FINISHED FLOOR LEVEL.
- C.L: CONCRETE LEVEL.

- STRUCTURAL COLUMN OR WALL TO CONTINUE.
- STRUCTURAL COLUMN OR WALL TO START.
- STRUCTURAL COLUMN OR WALL TO STOP.
- ARCHITECTURAL COLUMN OR WALL.
- SUNKEN SLAB.

BUREAU D'ETUDES
SARL
RODOLPHE MATTAR
 C.I.S. BUILDING - 72, MAIN ROAD, JAL EL DIB.
 Email : info@rodolphemattar.com
 PHONE/FAX (9614) 406326 P.O.BOX 70-1035 ANTELIAS LEBANON

BERNARD KHOURY ARCHITECTES
 IMM. SOCIETE LIBANAISE POUR LES METAUX
 3ème ETAGE RUE 56 SECTEUR JISR 77
 LA QUARANTAINE BEYROUTH 2077 7209 LIBAN
 TEL: +961 (0)1-570 670 - FAX: +961 (0)1-570 770
 E-MAIL: mailbox@bernardkhoury.com

STRUCTURAL SHOP DRAWINGS

 VERTEXGROUP.COM.CO
 Tripoli-Maarad-MEA Bldg-10th floor Tel : 06-205 504

PROJECT: DOGHMOSH LOT38		
PHASE: Shop Drawing		
DRAWING NUMBER & TITLE: DGM-S-SD-502F		
2ND BASEMENT		
ADDITIONAL TOP REINFORCEMENT		
+DB1 REINFORCEMENT (6/6)		
Dwg. Reference: C202-REPL-B2FL	Revision Number :	0
Format A1	Scale 1/100	Revision Issue Date : 18-02-2013